

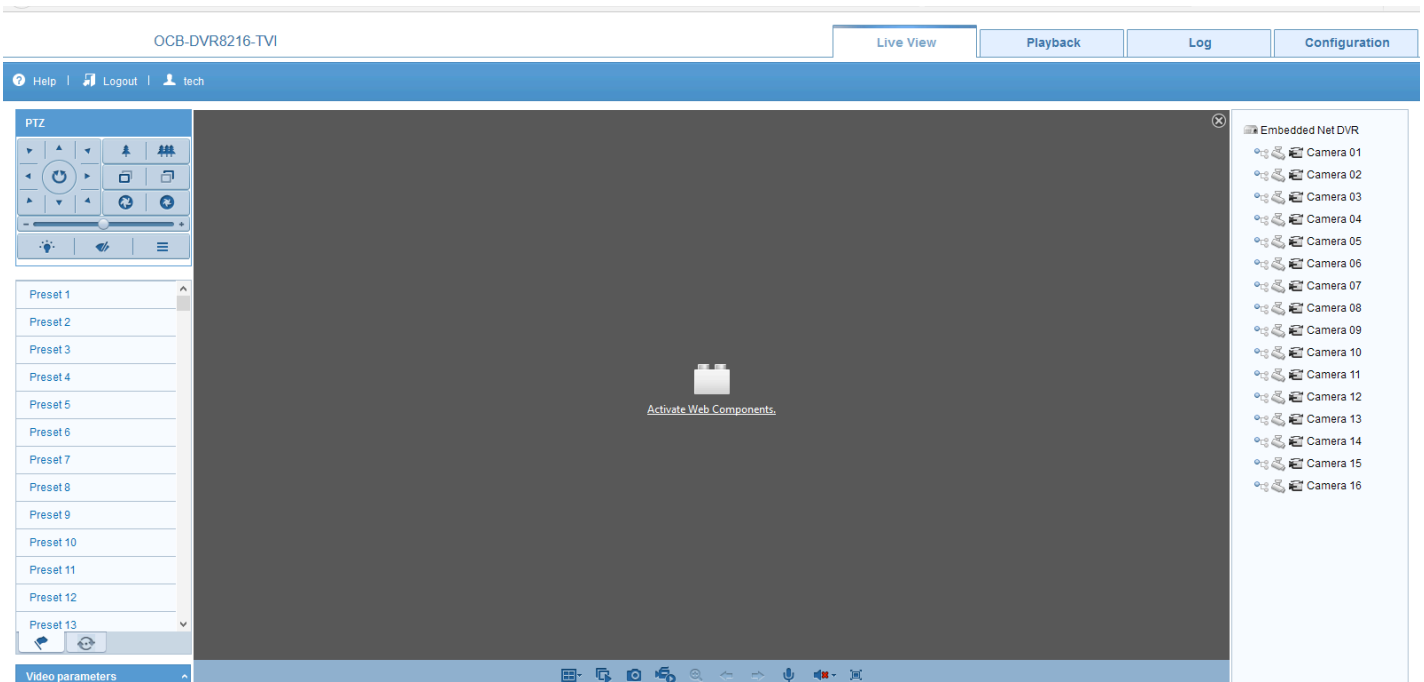
VIEW YOUR SECURITY CAMERAS IN WINDOWS.

Follow these steps if you want to view your Security Cameras from the browser in Windows.

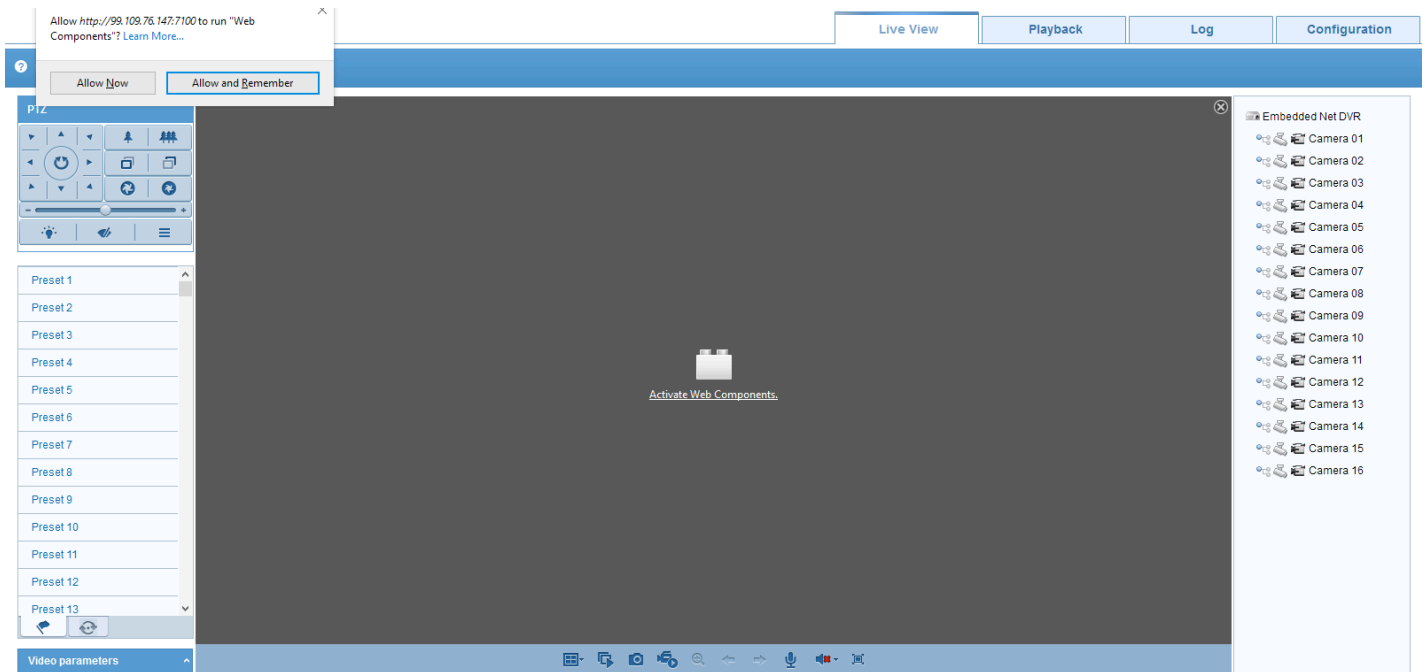
1. Enter to your browser. The system will only work on: Safari, Firefox or Internet Explorer.
2. In the address bar: type your IP address and HTTP port information and hit enter. For example: `http://192.168.1.25:3100` (the last four digits are the port number).
3. Put the Username and Password given by your tech team.

BLUE TECHNOLOGY

- Put your Username and Password given by your tech team. And click in activate Web components.



- Click in “Allow and Remember”.



- Click in “Configuration”.
- Click in “Local Configuration”.
- In auto start live view, change to YES.
- And you’r done! You can now see your cameras.

